

EXTERIOR FINISH LEGEND	
PWC A	PANELIZED WALL CLADDING FINISH COLOR A
PWC B	PANELIZED WALL CLADDING FINISH COLOR B
NSV A	NATURAL STONE VENEER - FINISH A
NSV B	NATURAL STONE VENEER - FINISH B
NSV C	NATURAL STONE VENEER CORNICE - FINISH A

THIS DRAWING IS THE PROPERTY OF BALLINA GROUP, LLC AND HAS BEEN PREPARED SPECIFICALLY FOR THE OWNER FOR THIS PROJECT AT THIS SITE, AND IS NOT TO BE USED FOR ANY OTHER PURPOSE, LOCATION, OR OWNER WITHOUT WRITTEN CONSENT OF BALLINA.GROUP.

**SOUTH NEW STREET MIXED-USE
APARTMENT COMPLEX**
317-327 S. NEW STREET
BETHLEHEM, PA

Ballina
GROUP, LLC

1435 Monroe Ave., Ste. 1, Dunmore, Pennsylvania 18509
Tel. 570.207.0195 www.ballinagroup.com

[illegible]

SOUTH AND EAST ELEVATIONS

Project Number	2020-21
Date	1/15/2020
Drawn By	CA
Checked By	JC
Scale	As indicated

A-201

**SOUTH NEW STREET MIXED-USE
APARTMENT COMPLEX**
317-327 S. NEW STREET
BETHLEHEM, PA

[illegible]

Project Number	2020-21
Date	1/15/2020
Drawn By	CA
Checked By	JC
Scale	3/16" = 1'-0"

This architectural floor plan illustrates the basement level of a building, featuring a grid system (A-E horizontally, 1-10 vertically) and detailed room layouts. The plan includes the following rooms and areas:

- STAIR A**: Located in the upper central area, with an "UP" arrow indicating the direction.
- STAIR B**: Located in the lower central area, with an "UP" arrow indicating the direction.
- TOILET ROOM**: Situated between Stair A and Stair B.
- ELEVATOR LOBBY**: Located to the right of Stair A.
- UTILITY**: Located in the lower left area.
- FIRE PUMP**: Located in the lower left area, adjacent to the Utility room.
- STORAGE**: Located in the upper left area.
- ELECTRICAL**: Located in the upper right area.
- BIKE STORAGE**: Located in the lower right area.
- FITNESS CENTER**: Located in the lower right area, adjacent to the Bike Storage.
- MULTI-PURPOSE**: Located in the lower right area, adjacent to the Fitness Center.

The plan also shows various dimensions for rooms and overall sections, as well as a north arrow pointing towards the top right. The grid lines are labeled A, A.5, A.6, A.7, B, B.1, C, D, D.1, and E horizontally, and 1, 2, 3, 4, 5, 6, 7, 8, 9, and 10 vertically.

3. SEE WALL SECTION DETAILS AND PRODUCT SPECIFICATIONS FOR INSTALLATION OF MATERIALS.
4. WALLS ARE DIMENSIONED TO FINISHED FACE. DOORS AND WINDOWS TO CENTERLINE.
5. STEEL JOISTS ARE TO BE INSTALLED PER MANUFACTURER'S RECOMMENDATIONS. STEEL GRID LINE
6. PLUMBING FIXTURE DIMENSIONS ARE FROM CENTERLINE OF FIXTURE TO FINISHED FACE OF PARTITION.
7. PROVIDE IN WALL 2X6 WOOD BLOCKING FOR ALL MANGROVE CASEWORK, COUNTERS, BATHROOM
8. SINKS, RAILS, AND HANDRAILS PER MANUFACTURER'S RECOMMENDATIONS.
9. REFER TO COORDINATE LOCATION OF ALL SUBGRADE UTILITY PENETRATIONS AND SLEEVES PRIOR TO
10. ALL POOL FOUNDATION SHALL BE CONCRETE.
11. REFER TO STRUCTURAL DRAWINGS FOR ALL FOUNDATION, SLAB AND STRUCTURAL STEEL LOCATIONS AND
12. DETAILS.
13. REFER TO FIRE PROTECTION DRAWINGS FOR ALL SPRINKLER HEAD AND PIPING SIZES AND LOCATIONS.
14. REFER TO PIPING DRAWINGS FOR ALL PIPING LAYOUT, SIZES AND FIXTURE SCHEDULE.
15. REFER TO MECHANICAL DRAWINGS FOR ALL HVAC LOCATIONS AND DETAILS. NOTE THIS SYSTEM IS A
16. PARTIAL PLENUM RETURN.
17. REFER TO ELECTRICAL DRAWINGS FOR ALL HVAC EMERGENCY LIGHTS AND POWER. NOTE THIS SYSTEM IS A
18. PARTIAL PLENUM RETURN.
19. QUANTITIES AND LOCATIONS.

**SOUTH NEW STREET MIXED-USE
APARTMENT COMPLEX**
317-327 S. NEW STREET
BETHLEHEM, PA

[illegible]

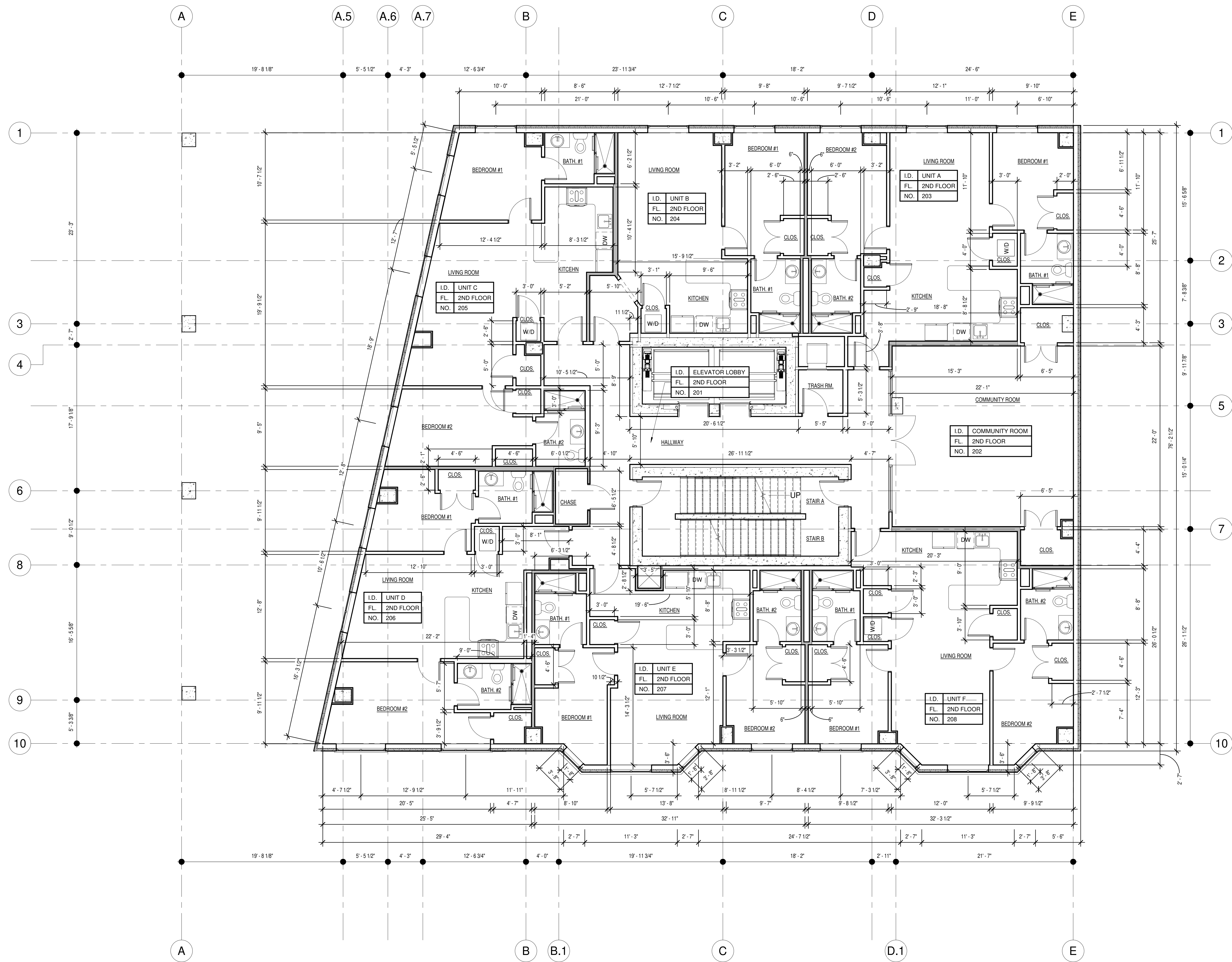
Project Number	2020-21
Date	1/15/2020
Drawn By	CA
Checked By	JC
Scale	3/16" = 1'-0"

Architectural floor plan of the ground floor of a building. The plan includes a grid system (A-E, 1-10) and dimensions. Key rooms and areas are labeled:

- RETAIL** (No. 107)
- TRASH ROOM** (No. 106)
- COMMUNITY ROOM** (No. 105)
- ELEVATOR LOBBY** (No. 101)
- PACKAGE ROOM** (No. 104)
- CLOSET** (No. 110)
- MAIL ROOM** (No. 102)
- LOBBY** (No. 101)
- ELEVATOR LOBBY** (No. 108)
- CHUTE**
- STAIR A**
- STAIR B**
- TOILET ROOM**
- PACKAGE ROOM**
- MAIL ROOM**

The plan also shows various corridors, including a **EXIT CORRIDOR**, and structural elements like walls, doors, and windows. Dimensions are provided for various sections of the plan.

1. SEE WALL SECTIONS, DETAILS AND PRODUCT SPECIFICATIONS FOR INSTALLATION OF MATERIALS.
2. WALLS ARE DIMENSIONED TO FINISHED FACE. DOORS AND WINDOWS TO CENTERLINE.
3. PROVIDE EMBLEMENETS TO PROTECT EXPOSED SURFACES OF STEEL OR CONCRETE. STEEL CORNERS AND EDGES TO BE FINISHED TO MATCH FINISH OF ADJACENT SURFACES.
4. PROVIDE FINISH DIMENSIONS ARE FROM CENTERLINE OF FIXTURE TO THE FINISH FACE OF PARTITION.
5. PROVIDE 1/4" MIN. X 2" WOOD BLOCKING FOR ALL MILLWORK, CASEWORK, COUNTERS, BATHROOM VANITIES, SINKS, RAILS, HANDRAILS, AND ALL MECHANICAL EQUIPMENT.
6. TRADES TO COORDINATE LOCATION OF ALL SUBGRADE UTILITY PENETRATIONS AND SLEEVES PRIOR TO CONSTRUCTION. PROVIDE SLEEVES TO BE 1/2" MIN. THICK.
7. REFER TO STRUCTURAL DRAWINGS FOR ALL FOUNDATION, SLAB AND STRUCTURAL STEEL LOCATIONS AND DETAILS.
8. REFER TO FIRE PROTECTION DRAWINGS FOR ALL SPRINKLER HEAD AND PIPING SIZES AND LOCATIONS.
9. REFER TO PIPING DRAWINGS FOR ALL PIPING LAYOUT, SIZES AND FIXTURE SCHEDULE.
10. PROVIDE MECHANICAL DRAWINGS FOR ALL HVAC LOCATIONS AND DETAILS. NOTE THIS SYSTEM IS A PARTIAL PLENUM RETURN.
11. REFER TO ELECTRICAL DRAWINGS FOR ALL EMERGENCY LIGHTING, POWER, DATA, TELEPHONE OUTLET LOCATIONS AND DETAILS.



1 SECOND FLOOR PLAN
A-102 SCALE: 3/16" = 1'-0"



- FLOOR PLAN NOTES:
- SEE WALL SECTIONS, DETAILS AND PRODUCT SPECIFICATIONS FOR INSTALLATION OF MATERIALS.
 - WALLS ARE DIMENSIONED TO FINISHED FACE. DOORS AND WINDOWS TO CENTERLINE.
 - STEEL DIMENSIONS ARE TO FACE OF STEEL OR CENTERLINE OF STEEL AS DENOTED BY STEEL GRID LINES.
 - PLUMBING FIXTURE DIMENSIONS ARE FROM CENTERLINE OF FIXTURE TO FINISHED FACE OF PARTITION.
 - PROVIDE IN WALL 2X WOOD BLOCKING FOR ALL MILLWORK, CASEWORK, COUNTERS, BATHROOM ACCESSORIES, RAILINGS AND MECHANICAL EQUIPMENT AS REQUIRED.
 - TRADES TO COORDINATE LOCATION OF ALL SUBGRADE UTILITY PENETRATIONS AND SLEEVES PRIOR TO CONTRACTOR POURING FOOTINGS AND FOUNDATION WALLS.
 - REFER TO STRUCTURAL DRAWINGS FOR ALL FOUNDATION, SLAB AND STRUCTURAL STEEL LOCATIONS AND DETAILS.
 - REFER TO FIRE PROTECTION DRAWINGS FOR ALL SPRINKLER HEAD AND PIPING SIZES AND LOCATIONS.
 - REFER TO PLUMBING DRAWINGS FOR ALL PIPING LAYOUT, SIZES AND FIXTURE SCHEDULE.
 - REFER TO MECHANICAL DRAWINGS FOR ALL HVAC LOCATIONS AND DETAILS. NOTE THIS SYSTEM IS A PARTIAL PLENUM RETURN.
 - REFER TO ELECTRICAL DRAWINGS FOR ALL EMERGENCY LIGHTING, POWER, DATA, TELEPHONE OUTLET QUANTITIES AND LOCATIONS.

THIS DRAWING IS THE PROPERTY OF BALLINA GROUP, LLC AND HAS BEEN PREPARED SPECIFICALLY FOR THE OWNER FOR THIS PROJECT AT THIS SITE, AND IS NOT TO BE USED FOR ANY OTHER PURPOSE, LOCATION, OR OWNER WITHOUT WRITTEN CONSENT OF BALLINA GROUP.

SOUTH NEW STREET MIXED-USE
APARTMENT COMPLEX
317-327 S. NEW STREET
BETHLEHEM, PA

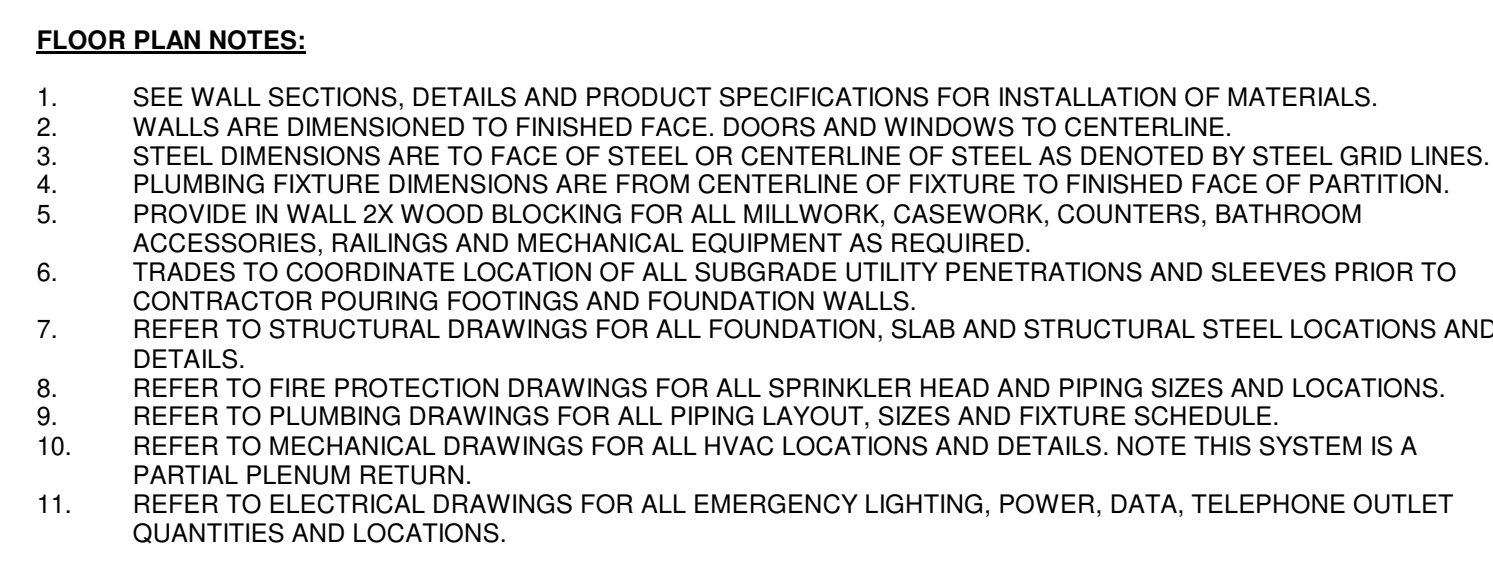
Ballina
GROUP, LLC
1409 Monroe Ave., Ste. 1, Dumas, Pennsylvania 15509
Tel: 570.207.0105 www.ballinagroup.com

No.	Description	Date

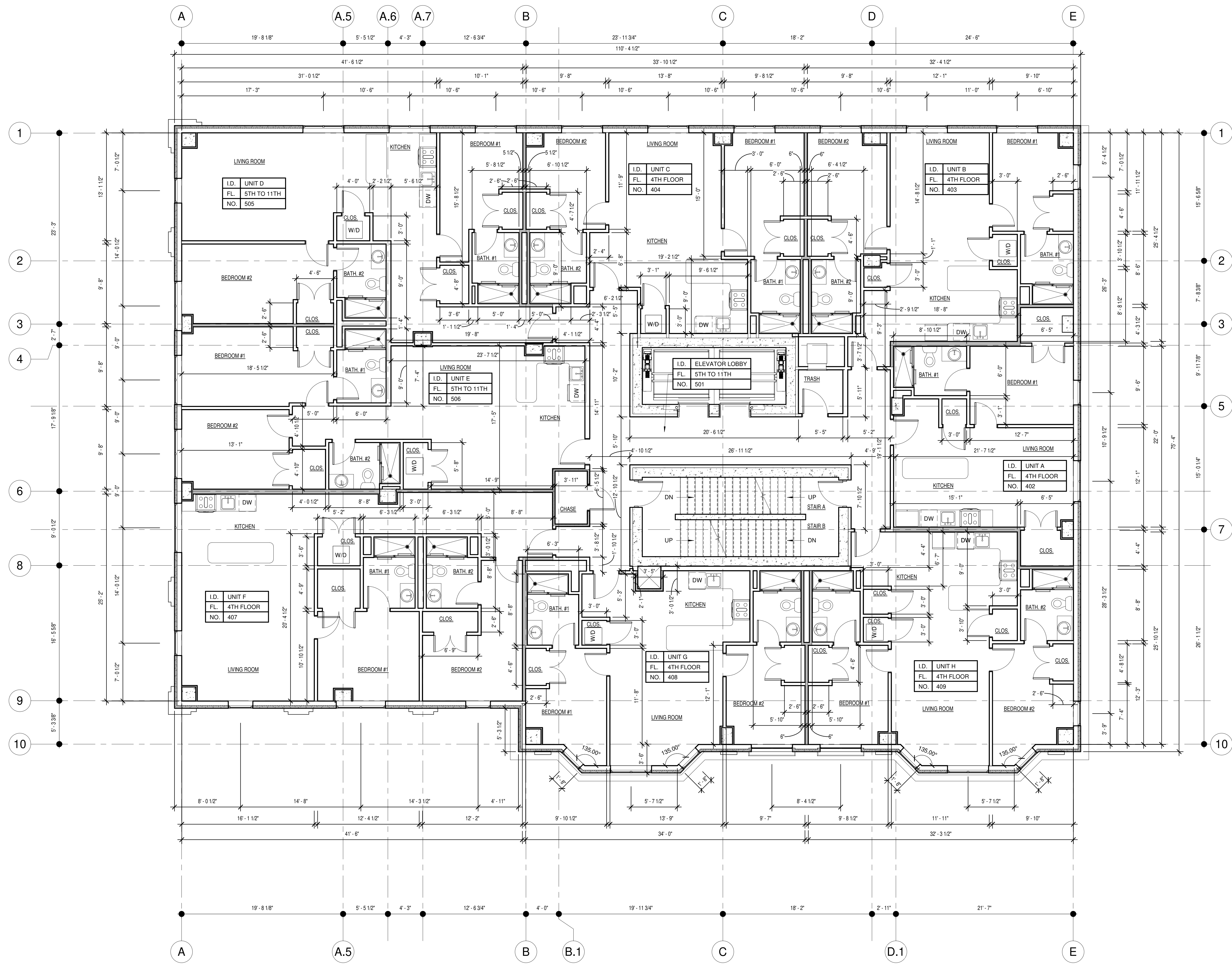
SECOND FLOOR PLAN

Project Number	2020-21
Date	1/15/2020
Drawn By	CA
Checked By	JC
Scale	3/16" = 1'-0"

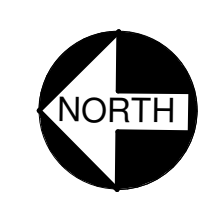
A-102



A-103



1
A-104
FOURTH FLOOR PLAN
SCALE: 3/16" = 1'-0"



- FLOOR PLAN NOTES:**
- SEE WALL SECTIONS, DETAILS AND PRODUCT SPECIFICATIONS FOR INSTALLATION OF MATERIALS.
 - WALLS ARE DIMENSIONED TO FINISHED FACE. DOORS AND WINDOWS TO CENTERLINE.
 - STEEL DIMENSIONS ARE TO FACE OF STEEL OR CENTERLINE OF STEEL AS DENOTED BY STEEL GRID LINES.
 - PLUMBING FIXTURE DIMENSIONS ARE FROM CENTERLINE OF FIXTURE TO FINISHED FACE OF PARTITION.
 - PROVIDE IN WALL 2X WOOD BLOCKING FOR ALL MILLWORK, CASEWORK, COUNTERS, BATHROOM ACCESSORIES, RAILINGS AND MECHANICAL EQUIPMENT AS REQUIRED.
 - TRADES TO COORDINATE LOCATION OF ALL SUBGRADE UTILITY PENETRATIONS AND SLEEVES PRIOR TO CONTRACTOR POURING FOOTINGS AND FOUNDATION WALLS.
 - REFER TO STRUCTURAL DRAWINGS FOR ALL FOUNDATION, SLAB AND STRUCTURAL STEEL LOCATIONS AND DETAILS.
 - REFER TO FIRE PROTECTION DRAWINGS FOR ALL SPRINKLER HEAD AND PIPING SIZES AND LOCATIONS.
 - REFER TO PLUMBING DRAWINGS FOR ALL PIPING LAYOUT, SIZES AND FIXTURE SCHEDULE.
 - REFER TO MECHANICAL DRAWINGS FOR ALL HVAC LOCATIONS AND DETAILS. NOTE THIS SYSTEM IS A PARTIAL PLENUM RETURN.
 - REFER TO ELECTRICAL DRAWINGS FOR ALL EMERGENCY LIGHTING, POWER, DATA, TELEPHONE OUTLET QUANTITIES AND LOCATIONS.

THIS DRAWING IS THE PROPERTY OF BALLINA GROUP, LLC AND HAS BEEN PREPARED SPECIFICALLY FOR THE OWNER FOR THIS PROJECT AT THIS SITE, AND IS NOT TO BE USED FOR ANY OTHER PURPOSE, LOCATION, OR OWNER WITHOUT WRITTEN CONSENT OF BALLINA GROUP.

**SOUTH NEW STREET MIXED-USE
APARTMENT COMPLEX**
317-327 S. NEW STREET
BETHLEHEM, PA

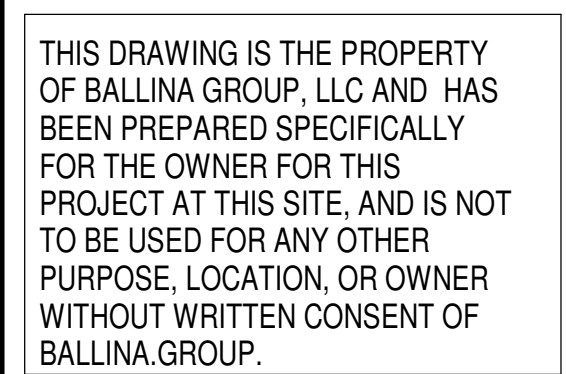
Ballina
GROUP, LLC
1409 Monroe Ave., Ste. 1, Dumas, Pennsylvania 15509
Tel. 370.207.0105 www.ballinagroup.com

No.	Description	Date

FOURTH FLOOR PLAN

Project Number	2020-21
Date	1/15/2020
Drawn By	CA
Checked By	JC
Scale	3/16" = 1'-0"

A-104



Ballina
GROUP, LLC
1439 Menzies Ave., Ste. 1, Dunwoody, Perimeter 18655
Tel. 570.207.0595 www.ballinagroup.com

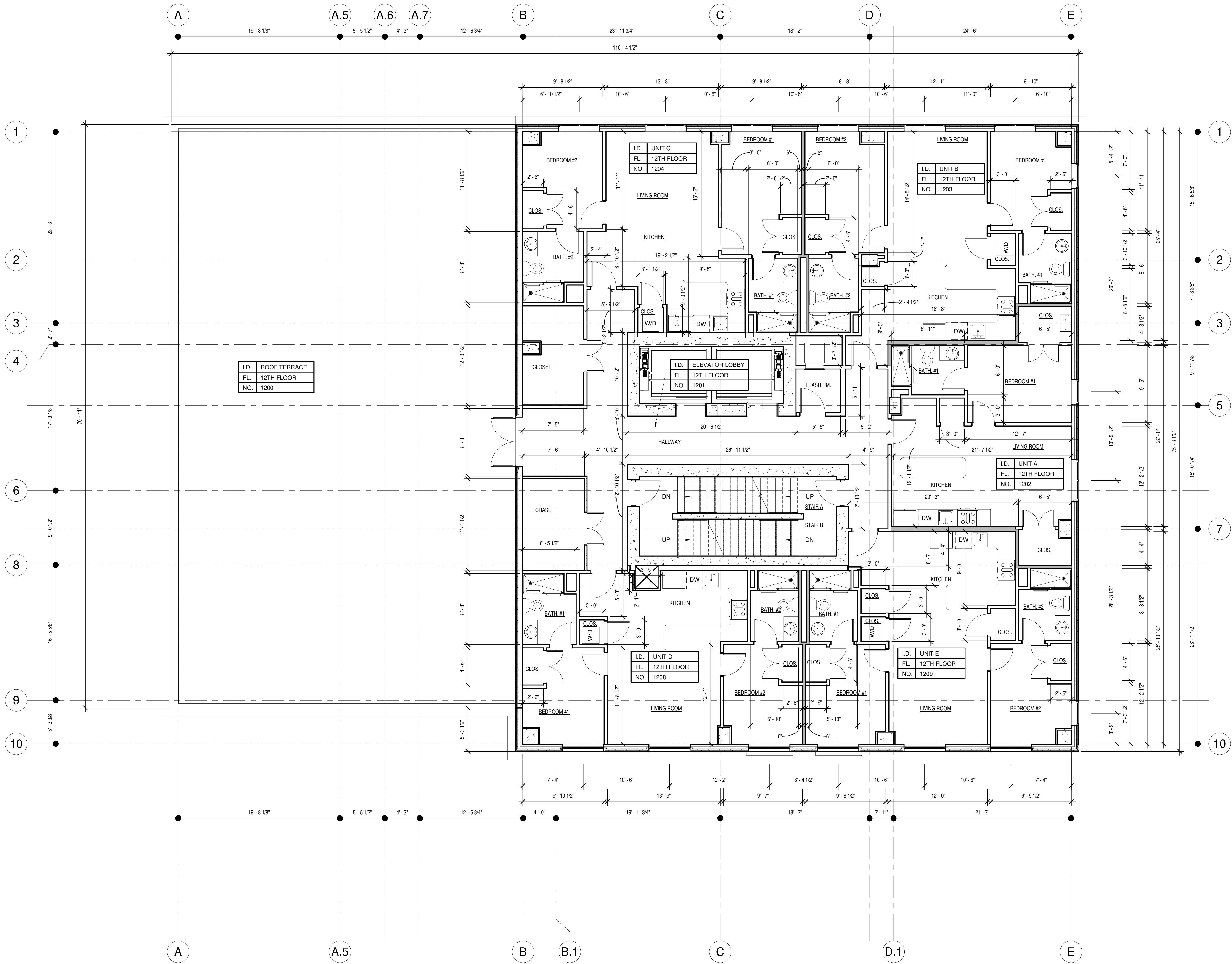
[illegible]

Project Number	2020-21
Date	1/15/2020
Drawn By	CA
Checked By	JC
Scale	3/16" = 1'-0"

A-105

FLOOR PLAN NOTES:

1. SEE WALL SECTIONS, DETAILS AND PRODUCT SPECIFICATIONS FOR INSTALLATION OF MATERIALS.
2. WALLS ARE DIMENSIONED TO FINISHED FACE. DOORS AND WINDOWS TO CENTERLINE.
3. STEEL DIMENSIONS ARE TO FACE OF STEEL OR CENTERLINE OF STEEL AS DENOTED BY STEEL GRID LINES.
4. PLUMBING FIXTURE DIMENSIONS ARE FROM CENTERLINE OF FIXTURE TO FINISHED FACE OF PARTITION.
5. SEE WALL CALL OUTS FOR ALL PARTITION, CASEWORK, COUNTERTOPS, BATHROOM ACCESSORIES, RAILINGS AND MECHANICAL EQUIPMENT AS REQUIRED.
6. TRADES TO COORDINATE LOCATION OF ALL SUBGRADE UTILITY PENETRATIONS AND SLEEVES PRIOR TO CONTRACTOR POURING FOOTINGS AND FOUNDATION WALLS.
7. REFER TO STRUCTURAL DRAWINGS FOR ALL FOUNDATION, SLAB AND STRUCTURAL STEEL LOCATIONS AND DETAILS.
8. REFER TO FIRE PROTECTION DRAWINGS FOR ALL SPRINKLER HEAD AND PIPING SIZES AND LOCATIONS.
9. REFER TO FIRE PROTECTION DRAWINGS FOR ALL ALARM, SMOKE AND FIXTURE SIZES AND LOCATIONS.
10. REFER TO MECHANICAL DRAWINGS FOR ALL HVAC LOCATIONS AND DETAILS. NOTE THIS SYSTEM IS A PARTIAL PLENUM RETURN.
11. REFER TO ELECTRICAL DRAWINGS FOR ALL EMERGENCY LIGHTING, POWER, DATA, TELEPHONE OUTLET QUANTITIES AND LOCATIONS.



1. TWELVETH FLOOR PLAN
A-106



- FLOOR PLAN NOTES:**
- SEE WALL SECTIONS, DETAILS AND PRODUCT SPECIFICATIONS FOR INSTALLATION OF MATERIALS.
 - WALLS ARE DIMENSIONED TO FINISHED FACE. DOORS AND WINDOWS TO CENTERLINE.
 - STEEL DIMENSIONS ARE TO FACE OF STEEL OR CENTERLINE OF STEEL AS DENOTED BY STEEL GRID LINES.
 - PLUMBING FIXTURE DIMENSIONS ARE FROM CENTERLINE OF FIXTURE TO FINISHED FACE OF PARTITION.
 - PROVIDE IN WALL 2X WOOD BLOCKING FOR ALL MILLWORK, CASEWORK, COUNTERS, BATHROOM ACCESSORIES, RAILINGS AND MECHANICAL EQUIPMENT AS REQUIRED.
 - TRADES TO COORDINATE LOCATION OF ALL SUBGRADE UTILITY PENETRATIONS AND SLEEVES PRIOR TO CONTRACTOR POURING FOOTINGS AND FOUNDATION WALLS.
 - REFER TO STRUCTURAL DRAWINGS FOR ALL FOUNDATION, SLAB AND STRUCTURAL STEEL LOCATIONS AND DETAILS.
 - REFER TO FIRE PROTECTION DRAWINGS FOR ALL SPRINKLER HEAD AND PIPING SIZES AND LOCATIONS.
 - REFER TO PLUMBING DRAWINGS FOR ALL PIPING LAYOUT, SIZES AND FIXTURE SCHEDULE.
 - REFER TO MECHANICAL DRAWINGS FOR ALL HVAC LOCATIONS AND DETAILS. NOTE THIS SYSTEM IS A PARTIAL PLENUM RETURN.
 - REFER TO ELECTRICAL DRAWINGS FOR ALL EMERGENCY LIGHTING, POWER, DATA, TELEPHONE OUTLET QUANTITIES AND LOCATIONS.

THIS DRAWING IS THE PROPERTY OF BALLINA GROUP, LLC AND HAS BEEN PREPARED SPECIFICALLY FOR THE OWNER FOR THIS PROJECT AT THIS SITE, AND IS NOT TO BE USED FOR ANY OTHER PURPOSE, LOCATION, OR OWNER WITHOUT WRITTEN CONSENT OF BALLINA GROUP.

SOUTH NEW STREET MIXED-USE
APARTMENT COMPLEX
317-327 S. NEW STREET
BETHLEHEM, PA

Ballina
GROUP, LLC

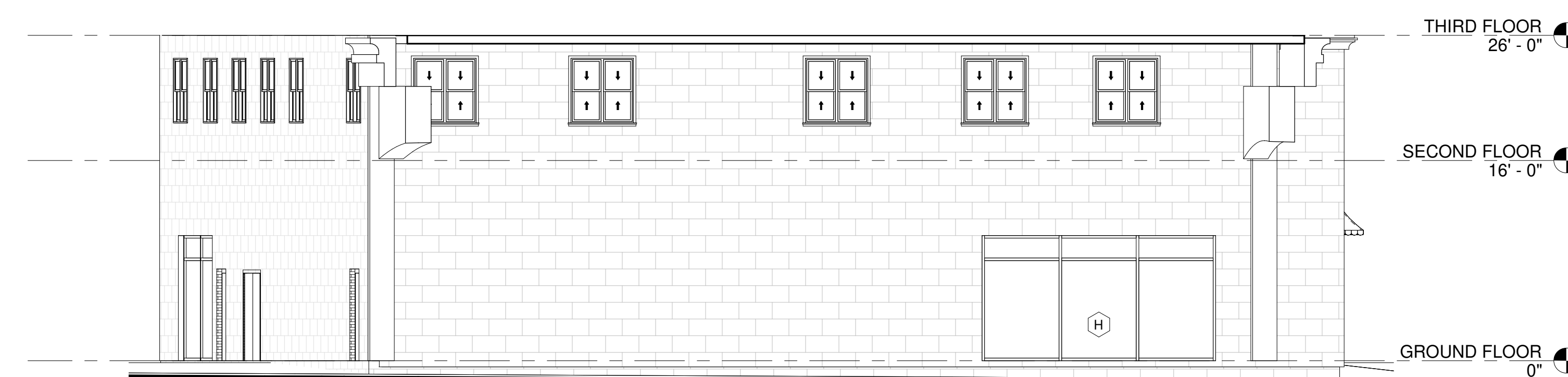
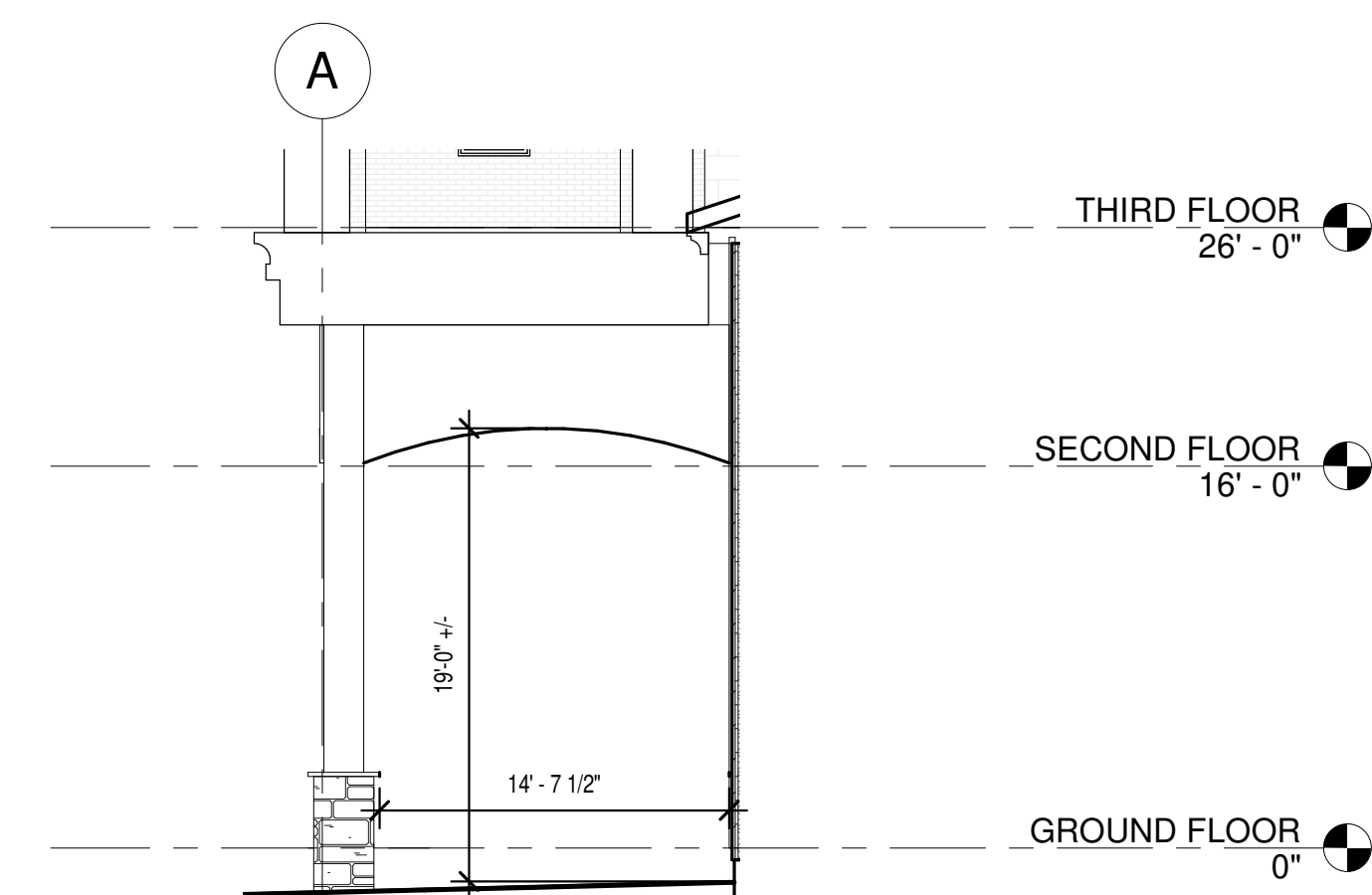
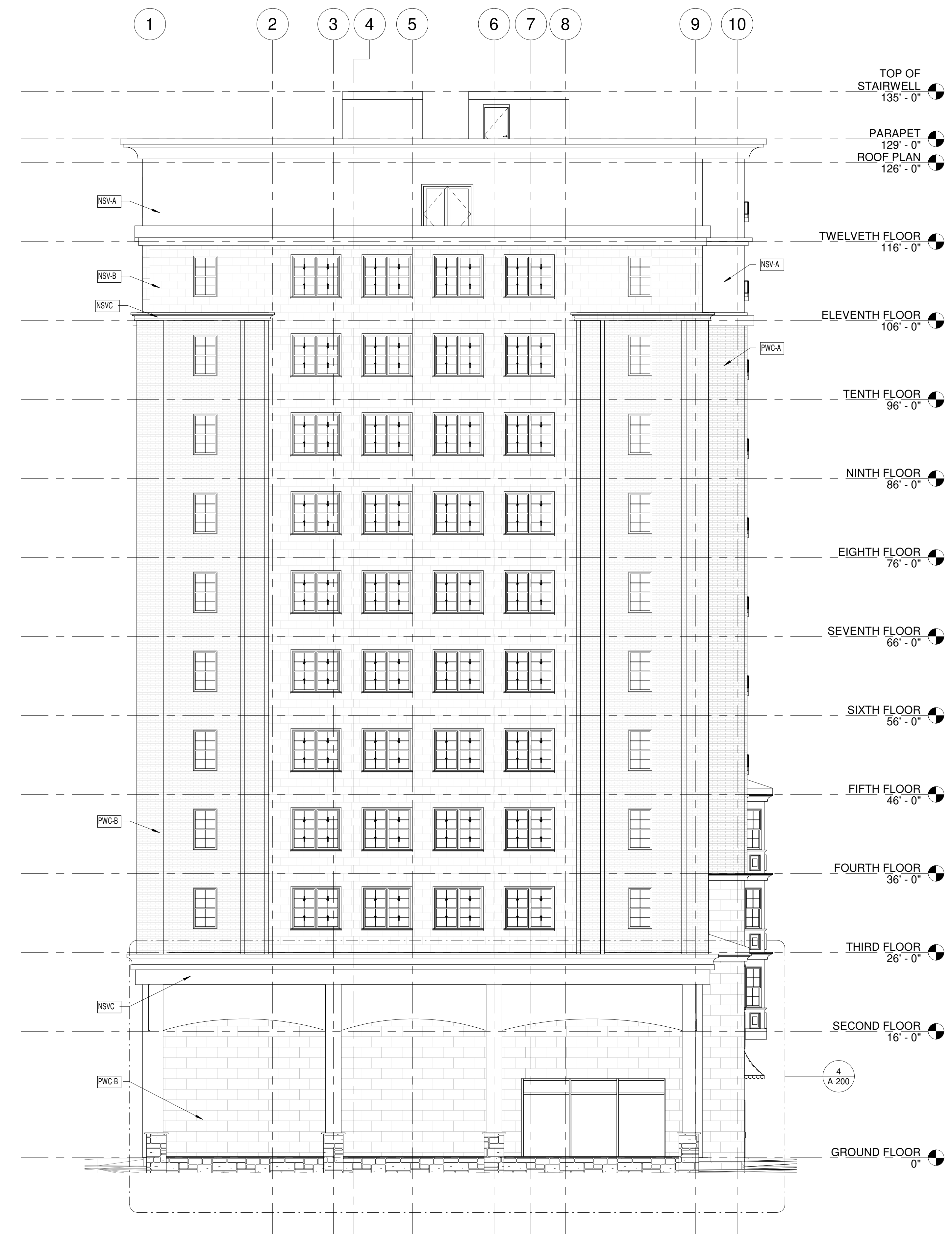
1409 Monroe Ave., Ste. 1, Duncraig, Pennsylvania 15069
Tel: 370.207.0105 www.ballinagroup.com

No.	Description	Date

TWELVETH FLOOR PLAN

Project Number	2020-21
Date	1/15/2020
Drawn By	CA
Checked By	JC
Scale	3/16" = 1'-0"

A-106



EXTERIOR FINISH LEGEND	
PWC-A	PANELIZED WALL CLADDING FINISH COLOR A
PWC-B	PANELIZED WALL CLADDING FINISH COLOR B
NSV-A	NATURAL STONE VENEER - FINISH A
NSV-B	NATURAL STONE VENEER - FINISH B
NSV-C	NATURAL STONE VENEER CORNICE - FINISH A

THIS DRAWING IS THE PROPERTY OF BALLINA GROUP, LLC AND HAS BEEN PREPARED SPECIFICALLY FOR THE OWNER FOR THIS PROJECT AT THIS SITE, AND IS NOT TO BE USED FOR ANY OTHER PURPOSE, LOCATION, OR OWNER WITHOUT WRITTEN CONSENT OF BALLINA.GROUP.

**SOUTH NEW STREET MIXED-USE
APARTMENT COMPLEX**
317-327 S. NEW STREET
BETHLEHEM, PA

Ballina
GROUP, LLC

1439 Monroe Ave., Ste. 1, Durnore, Pennsylvania 19059
Tel. 570.207.0195 www.ballinagroup.com

[illegible]NORTH AND WEST
ELEVATIONS

Project Number	2020-21
Date	1/15/2020
Drawn By	CA
Checked By	JC
Scale	As indicated

A-200

**SOUTH NEW STREET MIXED-USE
APARTMENT COMPLEX**
317-327 S. NEW STREET
BETHLEHEM, PA

[illegible]

Project Number	2020-21
Date	1/15/2020
Drawn By	CA
Checked By	JC
Scale	3/16" = 1'-0"

This architectural floor plan illustrates the basement level of a building, featuring a grid system (A-E horizontally, 1-10 vertically) and detailed room layouts. The plan includes the following rooms and areas:

- STAIR A**: Located in the upper central area, with an "UP" arrow indicating the direction.
- STAIR B**: Located in the lower central area, with an "UP" arrow indicating the direction.
- TOILET ROOM**: Situated between Stair A and Stair B.
- ELEVATOR LOBBY**: Located to the right of Stair A.
- UTILITY**: Located in the lower left area.
- FIRE PUMP**: Located in the lower left area, adjacent to the Utility room.
- STORAGE**: Located in the upper left area.
- ELECTRICAL**: Located in the upper right area.
- FITNESS CENTER**: Located in the upper right area.
- BIKE STORAGE**: Located in the lower right area.
- MULTI-PURPOSE**: Located in the lower right area.

The plan also shows various dimensions for rooms and overall sections, as well as a north arrow pointing towards the top of the page. The grid lines are labeled A, A.5, A.6, A.7, B, B.1, C, D, D.1, and E horizontally, and 1, 2, 3, 4, 5, 6, 7, 8, 9, and 10 vertically.

1. SEE WALL SECTION DETAILS AND PRODUCT SPECIFICATIONS FOR INSTALLATION OF MATERIALS.
2. WALLS ARE DIMENSIONED TO FINISHED FACE. DOORS AND WINDOWS TO CENTERLINE.
3. ALL DIMENSIONS ARE TO CENTERLINE OF STEEL DECK OR STEEL STUDS OR STEEL GRID LINES.
4. PLUMBING FIXTURE DIMENSIONS ARE FROM CENTERLINE OF FIXTURE TO FINISHED FACE OF PARTITION.
5. PROVIDE IN WALL 2X WOOD BLOCKING FOR ALL MILLWORK, CASEWORK, COUNTERS, BATHROOM
6. CLOSETRIES, BATHS, ETC. PROVIDE 2X WOOD BLOCKING FOR MECHANICAL EQUIPMENT.
7. TRACES TO COORDINATE LOCATION OF ALL SUBGRADE UTILITY PENETRATIONS AND SLEEVES FROM 10
8. TO FLOOR, FLOORING, FLOORING, FLOORING, FLOORING, FLOORING, FLOORING, FLOORING, FLOORING,
9. REFER TO STRUCTURAL DRAWINGS FOR ALL FOUNDATION, SLAB AND STRUCTURAL STEEL LOCATIONS AND
10. DETAILS.
11. REFER TO FIRE PROTECTION DRAWINGS FOR ALL SPRINKLER HEAD AND PIPING SIZES AND LOCATIONS.
12. REFER TO PLUMBING DRAWINGS FOR ALL PIPING LAYOUT, SIZES AND PICTURE SCHEDULE.
13. REFER TO MECHANICAL DRAWINGS FOR ALL HVAC LOCATIONS AND DETAILS. NOTE THIS SYSTEM IS A
14. REPAIR TO ELECTRICAL RETURN.
15. REFER TO ELECTRICAL DRAWINGS FOR ALL EMERGENCY LIGHTING AND POWER, DATA, TELEPHONE OUTLET
16. LOCATIONS AND LOCATIONS.

**SOUTH NEW STREET MIXED-USE
APARTMENT COMPLEX**
317-327 S. NEW STREET
BETHLEHEM, PA

[illegible]

Project Number	2020-21
Date	1/15/2020
Drawn By	CA
Checked By	JC
Scale	3/16" = 1'-0"

Architectural floor plan of the ground floor of a building. The plan includes a grid system with letters A through E and numbers 1 through 10. Rooms are labeled with their ID, floor, and number. Key areas include a Retail area (No. 107), Trash Room (No. 106), Community Room (No. 105), Elevator Lobby (No. 101), Package Room (No. 104), Closet (No. 110), Mail Room (No. 102), and Lobby (No. 101). The plan also shows a Chute, Stair A, Stair B, and a Suite Corridor. Dimensions are provided for various sections and overall building dimensions. A north arrow is located in the bottom right corner.

Room Schedule:

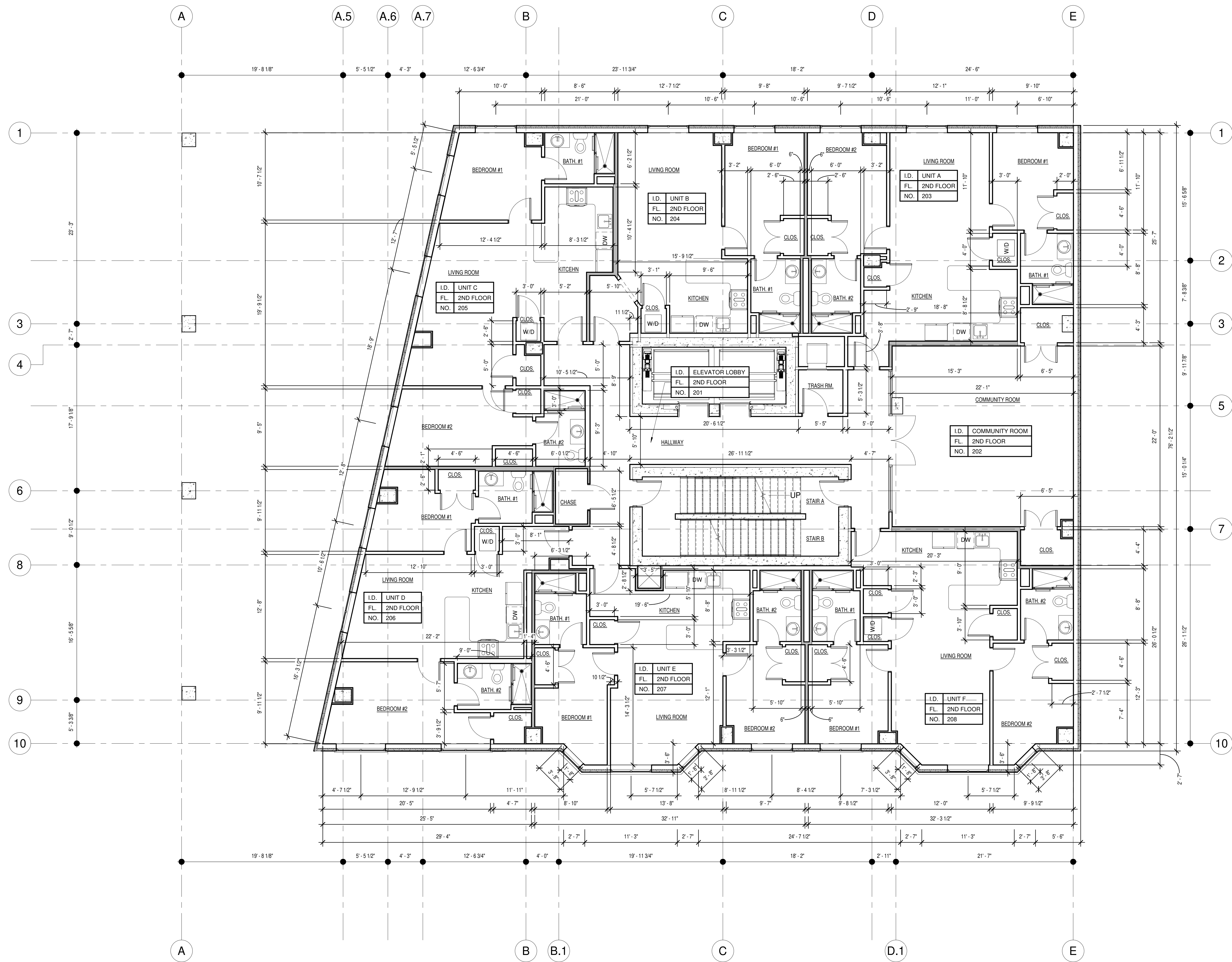
ID	Floor	Room Name	Room Number
I.D. 107	FL. GROUND FLOOR	RETAIL	NO. 107
I.D. 106	FL. GROUND FLOOR	TRASH ROOM	NO. 106
I.D. 105	FL. GROUND FLOOR	COMMUNITY ROOM	NO. 105
I.D. 104	FL. GROUND FLOOR	PACKAGE ROOM	NO. 104
I.D. 110	FL. GROUND FLOOR	CLOSET	NO. 110
I.D. 103	FL. GROUND FLOOR	PACKAGE ROOM	NO. 103
I.D. 102	FL. GROUND FLOOR	MAIL ROOM	NO. 102
I.D. 101	FL. GROUND FLOOR	LOBBY	NO. 101
I.D. 101	FL. GROUND FLOOR	ELEVATOR LOBBY	NO. 101
I.D. 108	FL. GROUND FLOOR	ELEVATOR LOBBY	NO. 108

Dimensions:

- Overall width: 19'-8 1/8" (A to A.5), 5'-5 1/2" (A.5 to A.6), 4'-3" (A.6 to A.7), 12'-6 3/4" (A.7 to B), 19'-11 3/4" (B to C), 18'-2" (C to D), 21'-7" (D to E).
- Overall depth: 23'-3" (1 to 3), 17'-9 1/8" (3 to 6), 9'-0 1/2" (6 to 8), 15'-5 5/8" (8 to 9), 5'-3 3/8" (9 to 10).
- Room dimensions: 34'-4 1/2" (top), 15'-6" (top right), 24'-1 1/2" (top right), 76'-4 1/2" (top), 18'-2" (top), 24'-6" (top), 34'-2" (right), 15'-5 5/8" (right), 7'-8 3/8" (right), 9'-11 7/8" (right), 7'-6" (right), 10'-10" (right), 8'-0" (right), 28'-10 1/2" (right), 20'-2 1/2" (right), 26'-1 1/2" (right), 11'-11" (bottom right), 28'-2" (bottom right), 5'-0" (bottom right), 25'-6 1/2" (bottom right), 15'-9" (bottom right), 15'-9" (bottom right), 9'-4" (bottom right), 13'-1" (bottom right).

Other Labels: TRASH ROOM, COMMUNITY ROOM, PACKAGE ROOM, TOILET ROOM, CHUTE, STAIR A, STAIR B, SUITE CORRIDOR, RETAIL, ELEVATOR LOBBY, CLOSET, MAIL ROOM, LOBBY.

1. SEE WALL SECTION DETAILS AND PRODUCT SPECIFICATIONS FOR INSTALLATION OF MATERIALS.
2. WALLS ARE DIMENSIONED TO FINISHED FACE. DOORS AND WINDOWS TO CENTERLINE.
3. SEE FLOORING SECTION FOR FINISHES. FLOORING TO BE CENTERLINE OF STEEL GRID LINES.
4. PLUMBING FIXTURE DIMENSIONS ARE FROM CENTERLINE OF FIXTURE TO FINISHED FACE OF PARTITION.
5. PROVIDE IN WALL 2X6 WOOD BLOCKING FOR ALL MILLWORK, CASEWORK, COUNTERS, BATHROOMS.
6. SEE ELECTRICAL RACEWAY AND MECHANICAL EQUIPMENT SECTION FOR RACEWAY AND EQUIPMENT.
7. TRADES TO COORDINATE LOCATION OF ALL SUBGRADE UTILITY PENETRATIONS AND SLEEVES PRIOR TO CONSTRUCTION. POLYURETHANE FOAM TO BE USED TO FILL ALL HOLES AND JOINTS.
8. REFER TO STRUCTURAL DRAWINGS FOR ALL FOUNDATION, SLAB AND STRUCTURAL STEEL LOCATIONS AND DETAILS.
9. REFER TO FIRE PROTECTION DRAWINGS FOR ALL SPRINKLER HEAD AND PIPING SIZES AND LOCATIONS.
10. REFER TO PLUMBING DRAWINGS FOR ALL PIPING LAYOUT, SIZES AND FIXTURE SCHEDULE.
11. REFER TO MECHANICAL DRAWINGS FOR ALL HVAC LOCATIONS AND DETAILS. NOTE THIS SYSTEM IS A PARTIAL PLENUM RETURN.
12. REFER TO ELECTRICAL DRAWINGS FOR ALL EMERGENCY LIGHTING, POWER, DATA, TELEPHONE OUTLET QUANTITIES AND LOCATIONS.



1 SECOND FLOOR PLAN
A-102 SCALE: 3/16" = 1'-0"



- FLOOR PLAN NOTES:**
- SEE WALL SECTIONS, DETAILS AND PRODUCT SPECIFICATIONS FOR INSTALLATION OF MATERIALS.
 - WALLS ARE DIMENSIONED TO FINISHED FACE. DOORS AND WINDOWS TO CENTERLINE.
 - STEEL DIMENSIONS ARE TO FACE OF STEEL OR CENTERLINE OF STEEL AS DENOTED BY STEEL GRID LINES.
 - PLUMBING FIXTURE DIMENSIONS ARE FROM CENTERLINE OF FIXTURE TO FINISHED FACE OF PARTITION.
 - PROVIDE IN WALL 2X WOOD BLOCKING FOR ALL MILLWORK, CASEWORK, COUNTERS, BATHROOM ACCESSORIES, RAILINGS AND MECHANICAL EQUIPMENT AS REQUIRED.
 - TRADES TO COORDINATE LOCATION OF ALL SUBGRADE UTILITY PENETRATIONS AND SLEEVES PRIOR TO CONTRACTOR POURING FOOTINGS AND FOUNDATION WALLS.
 - REFER TO STRUCTURAL DRAWINGS FOR ALL FOUNDATION, SLAB AND STRUCTURAL STEEL LOCATIONS AND DETAILS.
 - REFER TO FIRE PROTECTION DRAWINGS FOR ALL SPRINKLER HEAD AND PIPING SIZES AND LOCATIONS.
 - REFER TO PLUMBING DRAWINGS FOR ALL PIPING LAYOUT, SIZES AND FIXTURE SCHEDULE.
 - REFER TO MECHANICAL DRAWINGS FOR ALL HVAC LOCATIONS AND DETAILS. NOTE THIS SYSTEM IS A PARTIAL PLENUM RETURN.
 - REFER TO ELECTRICAL DRAWINGS FOR ALL EMERGENCY LIGHTING, POWER, DATA, TELEPHONE OUTLET QUANTITIES AND LOCATIONS.

THIS DRAWING IS THE PROPERTY OF BALLINA GROUP, LLC AND HAS BEEN PREPARED SPECIFICALLY FOR THE OWNER FOR THIS PROJECT AT THIS SITE, AND IS NOT TO BE USED FOR ANY OTHER PURPOSE, LOCATION, OR OWNER WITHOUT WRITTEN CONSENT OF BALLINA GROUP.

**SOUTH NEW STREET MIXED-USE
APARTMENT COMPLEX**
317-327 S. NEW STREET
BETHLEHEM, PA

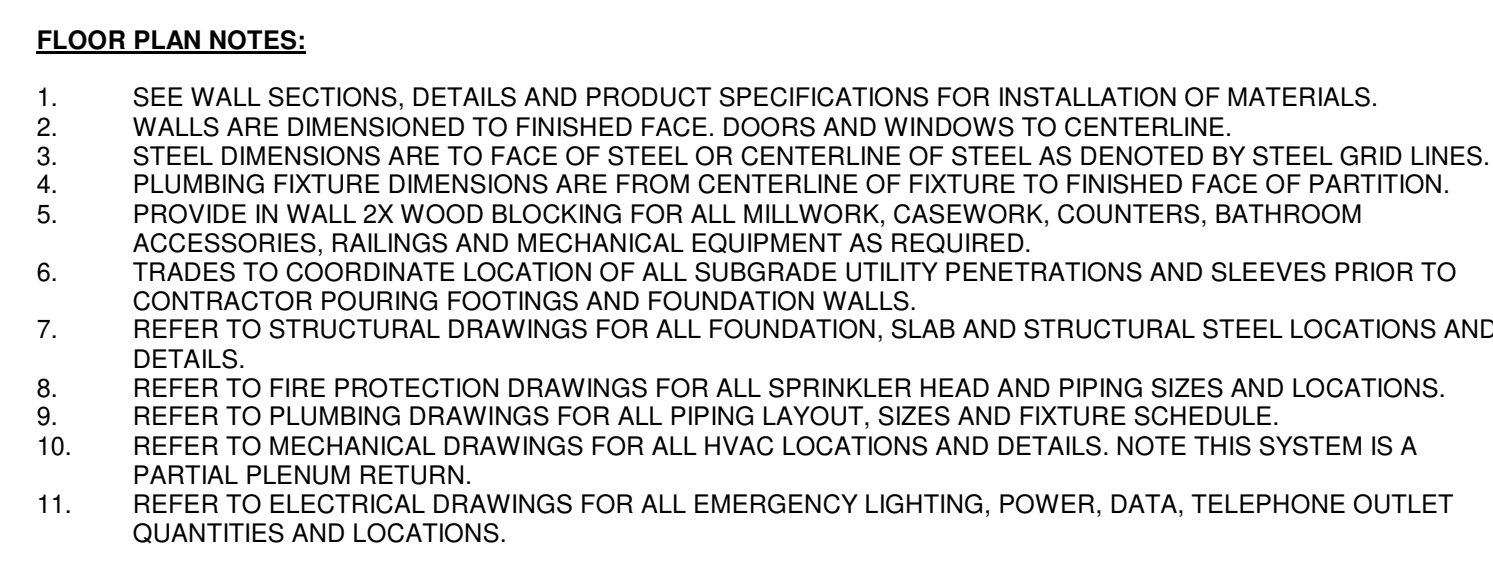
Ballina
GROUP, LLC
1409 Monroe Ave., Ste. 1, Dumas, Pennsylvania 15509
Tel: 570.207.0105 www.ballinagroup.com

No.	Description	Date

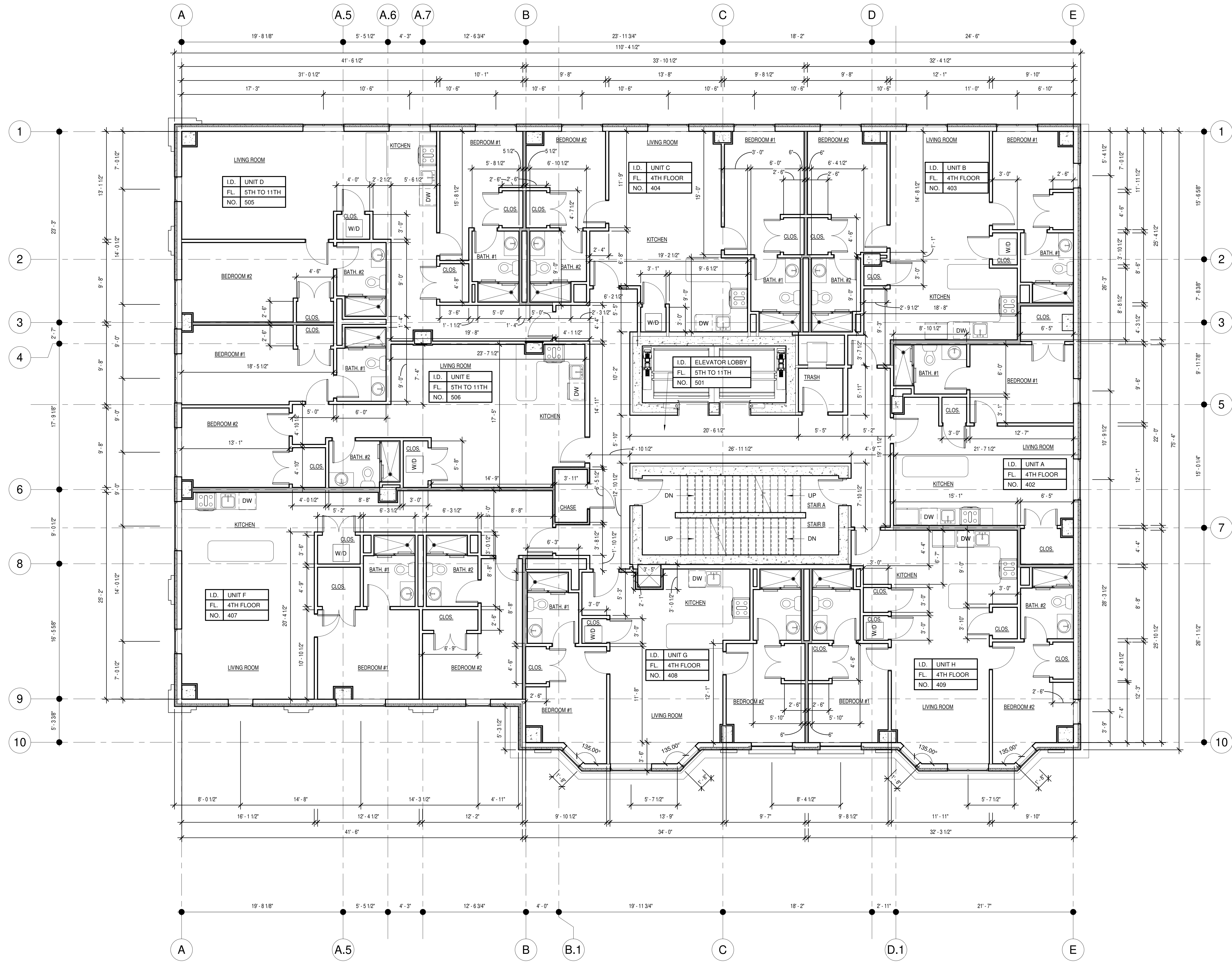
SECOND FLOOR PLAN

Project Number	2020-21
Date	1/15/2020
Drawn By	CA
Checked By	JC
Scale	3/16" = 1'-0"

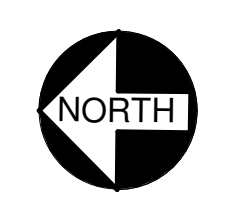
A-102



A-103



1 FOURTH FLOOR PLAN
A-104 SCALE: 3/16" = 1'-0"



- FLOOR PLAN NOTES:**
- SEE WALL SECTIONS, DETAILS AND PRODUCT SPECIFICATIONS FOR INSTALLATION OF MATERIALS.
 - WALLS ARE DIMENSIONED TO FINISHED FACE. DOORS AND WINDOWS TO CENTERLINE.
 - STEEL DIMENSIONS ARE TO FACE OF STEEL OR CENTERLINE OF STEEL AS DENOTED BY STEEL GRID LINES.
 - PLUMBING FIXTURE DIMENSIONS ARE FROM CENTERLINE OF FIXTURE TO FINISHED FACE OF PARTITION.
 - PROVIDE IN WALL 2X WOOD BLOCKING FOR ALL MILLWORK, CASEWORK, COUNTERS, BATHROOM ACCESSORIES, RAILINGS AND MECHANICAL EQUIPMENT AS REQUIRED.
 - TRADES TO COORDINATE LOCATION OF ALL SUBGRADE UTILITY PENETRATIONS AND SLEEVES PRIOR TO CONTRACTOR POURING FOOTINGS AND FOUNDATION WALLS.
 - REFER TO STRUCTURAL DRAWINGS FOR ALL FOUNDATION, SLAB AND STRUCTURAL STEEL LOCATIONS AND DETAILS.
 - REFER TO FIRE PROTECTION DRAWINGS FOR ALL SPRINKLER HEAD AND PIPING SIZES AND LOCATIONS.
 - REFER TO PLUMBING DRAWINGS FOR ALL PIPING LAYOUT, SIZES AND FIXTURE SCHEDULE.
 - REFER TO MECHANICAL DRAWINGS FOR ALL HVAC LOCATIONS AND DETAILS. NOTE THIS SYSTEM IS A PARTIAL PLENUM RETURN.
 - REFER TO ELECTRICAL DRAWINGS FOR ALL EMERGENCY LIGHTING, POWER, DATA, TELEPHONE OUTLET QUANTITIES AND LOCATIONS.

THIS DRAWING IS THE PROPERTY OF BALLINA GROUP, LLC AND HAS BEEN PREPARED SPECIFICALLY FOR THE OWNER FOR THIS PROJECT AT THIS SITE, AND IS NOT TO BE USED FOR ANY OTHER PURPOSE, LOCATION, OR OWNER WITHOUT WRITTEN CONSENT OF BALLINA GROUP.

**SOUTH NEW STREET MIXED-USE
APARTMENT COMPLEX**
317-327 S. NEW STREET
BETHLEHEM, PA

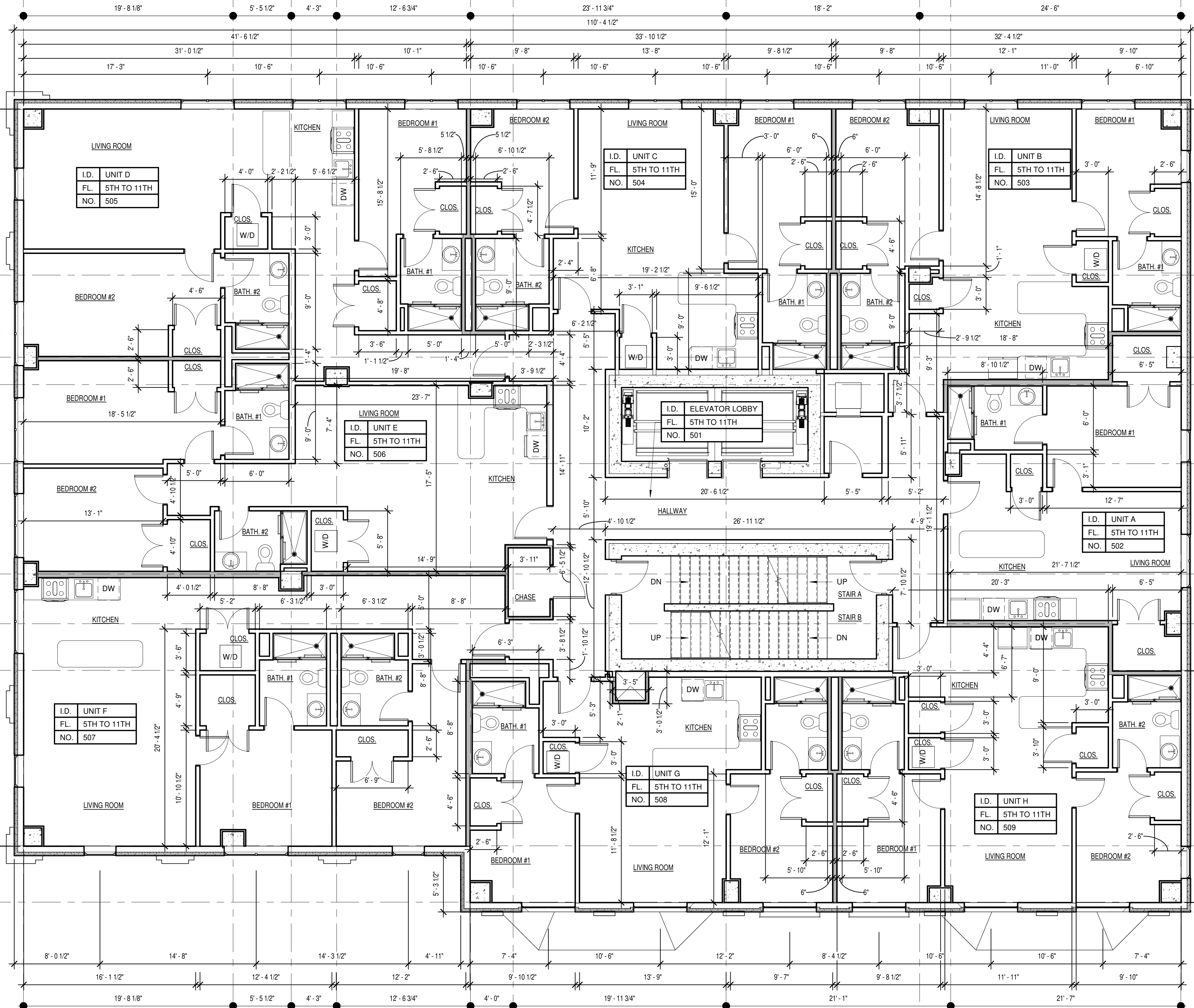
Ballina
GROUP, LLC
1409 Monroe Ave., Ste. 1, Dumont, Pennsylvania 15509
Tel. 370.207.0105 www.ballinagroup.com

No.	Description	Date

FOURTH FLOOR PLAN

Project Number	2020-21
Date	1/15/2020
Drawn By	CA
Checked By	JC
Scale	3/16" = 1'-0"

A-104



A-105

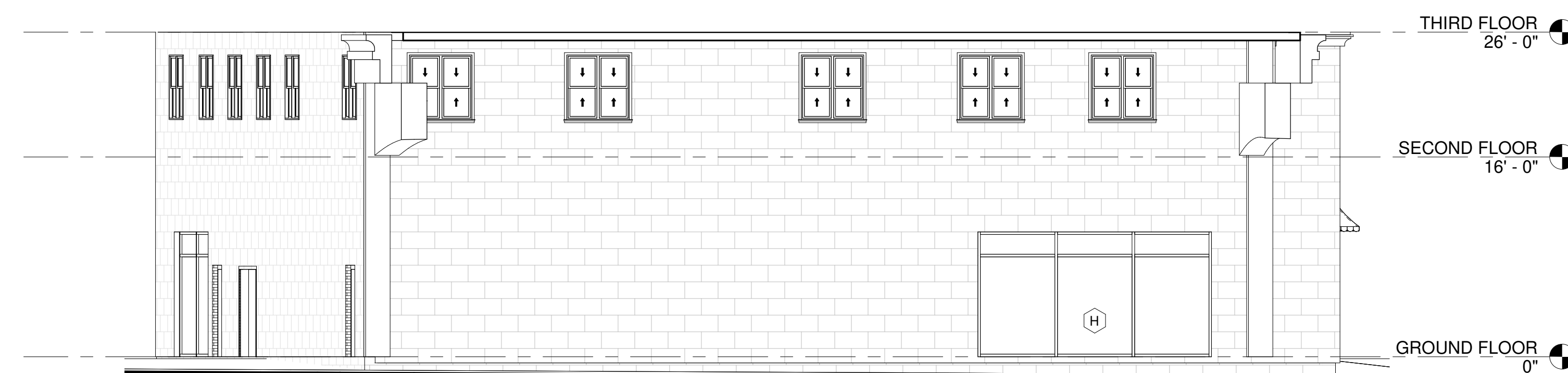
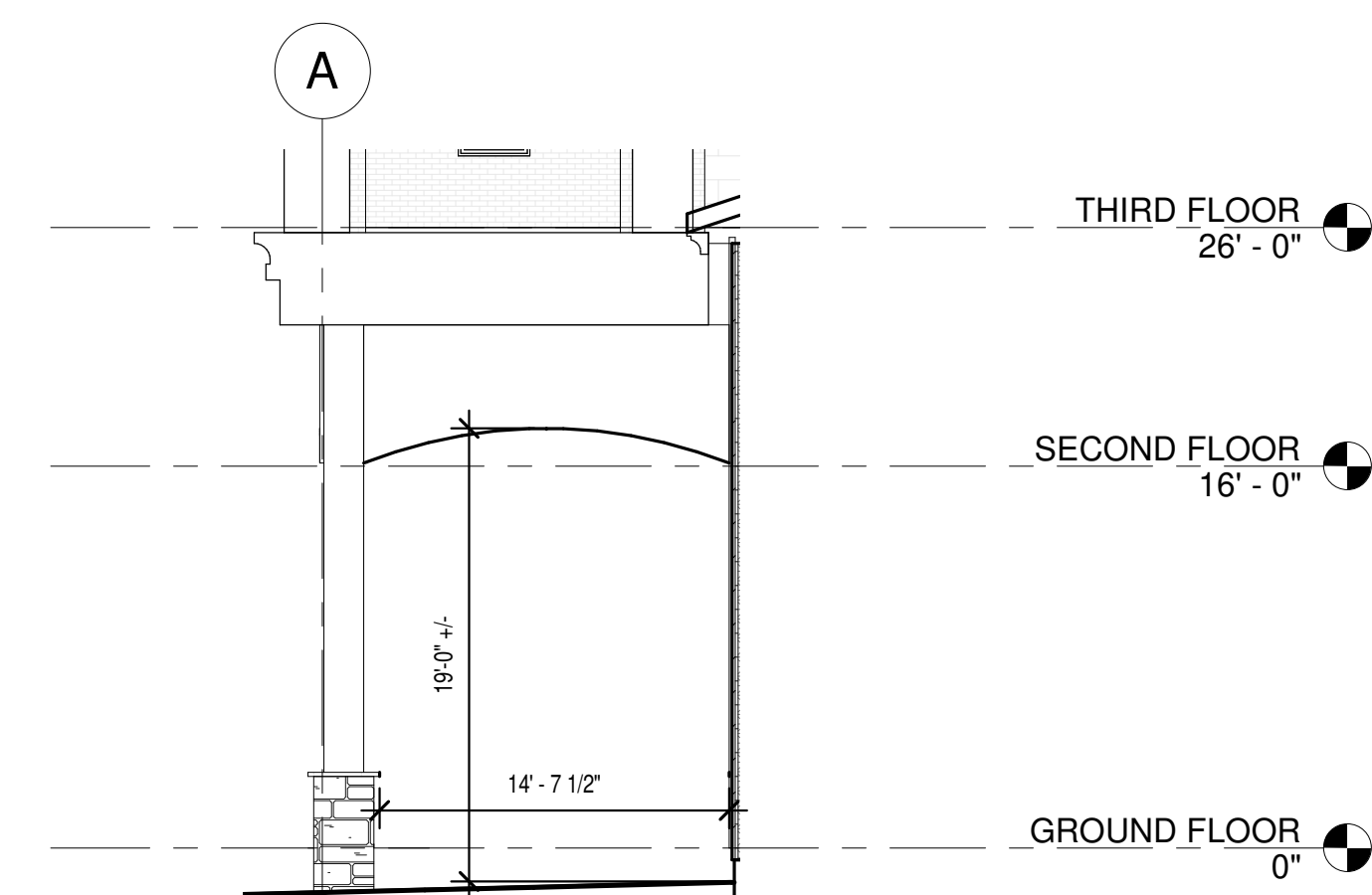
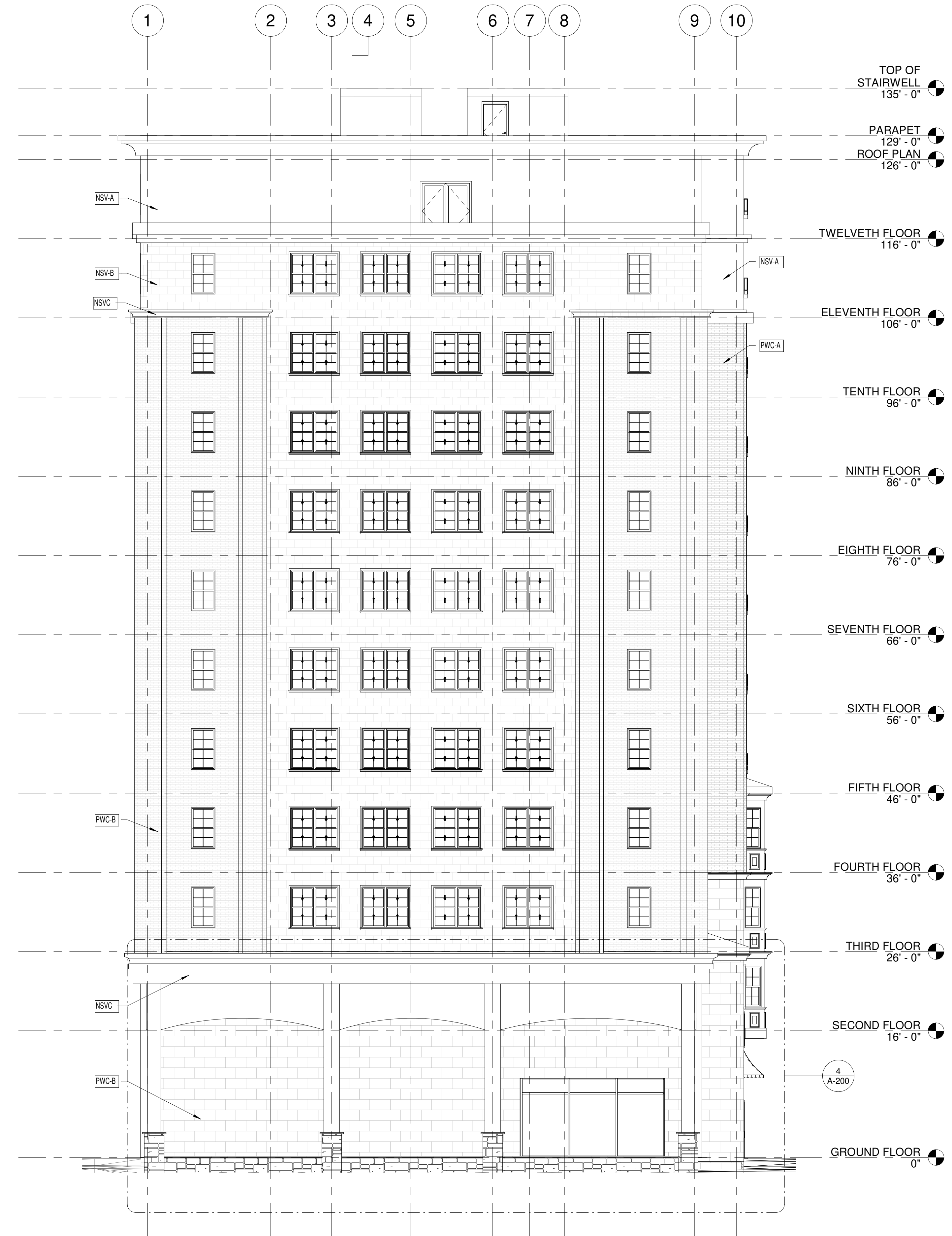
A-105



3. SEE WALL SECTIONS, DETAILS AND PRODUCT SPECIFICATIONS FOR INSTALLATION OF MATERIALS.
4. WALLS ARE DIMENSIONED TO FINISHED FACE. DOORS AND WINDOWS TO CENTERLINE.
5. STEEL SECTIONS ARE DIMENSIONED TO CENTERLINE. STEEL TRIM TO CENTERLINE. STEEL GRID LINES
6. PROVIDE FUTURE DIMENSIONS ARE FROM CENTERLINE OF FINISH FACE TO FINISHED FACE OF PARTITION.
7. PLUMBING HANG 2X6 WOOD BLOCKING FOR ALL MILLWORK, FIREWORK, COUNTERS, BATHROOM
8. PROVIDE RAILING, RAILING BRACKET, RAILING POST, RAILING HANDRAIL, RAILING REFLECTOR
9. TRADES TO COORDINATE LOCATION OF ALL SUBGRADE UTILITY PENETRATIONS AND SLEEVES PRIOR TO CONSTRUCTION OF POURING CONCRETE.
10. REFER TO STRUCTURAL DRAWINGS FOR ALL FOUNDATION, SLAB AND STRUCTURAL STEEL LOCATIONS AND DETAILS.
11. REFER TO FIRE PROTECTION DRAWINGS FOR ALL SPRINKLER HEAD AND PIPING SIZES AND LOCATIONS.
12. REFER TO PIPING DRAWINGS FOR ALL PIPING LAYOUT, SIZES AND FIXTURE SCHEDULE.
13. REFER TO MECHANICAL DRAWINGS FOR ALL HVAC LOCATIONS AND DETAILS. NOTE THIS SYSTEM IS A PLANT PLENUM RETURN.
14. REFER TO ELECTRICAL DRAWINGS FOR ALL EMERGENCY LIGHTS AND DETAIL. TELEPHONE OUTLET QUANTITIES AND LOCATIONS.

Tel. 570 207 0195 www.ballinagroup.com

A-106



EXTERIOR FINISH LEGEND	
PWC-A	PANELIZED WALL CLADDING FINISH COLOR A
PWC-B	PANELIZED WALL CLADDING FINISH COLOR B
NSV-A	NATURAL STONE VENEER - FINISH A
NSV-B	NATURAL STONE VENEER - FINISH B
NSVC	NATURAL STONE VENEER CORNICE - FINISH A

THIS DRAWING IS THE PROPERTY OF BALLINA GROUP, LLC AND HAS BEEN PREPARED SPECIFICALLY FOR THE OWNER FOR THIS PROJECT AT THIS SITE, AND IS NOT TO BE USED FOR ANY OTHER PURPOSE, LOCATION, OR OWNER WITHOUT WRITTEN CONSENT OF BALLINA.GROUP.

**SOUTH NEW STREET MIXED-USE
APARTMENT COMPLEX**
317-327 S. NEW STREET
BETHLEHEM, PA

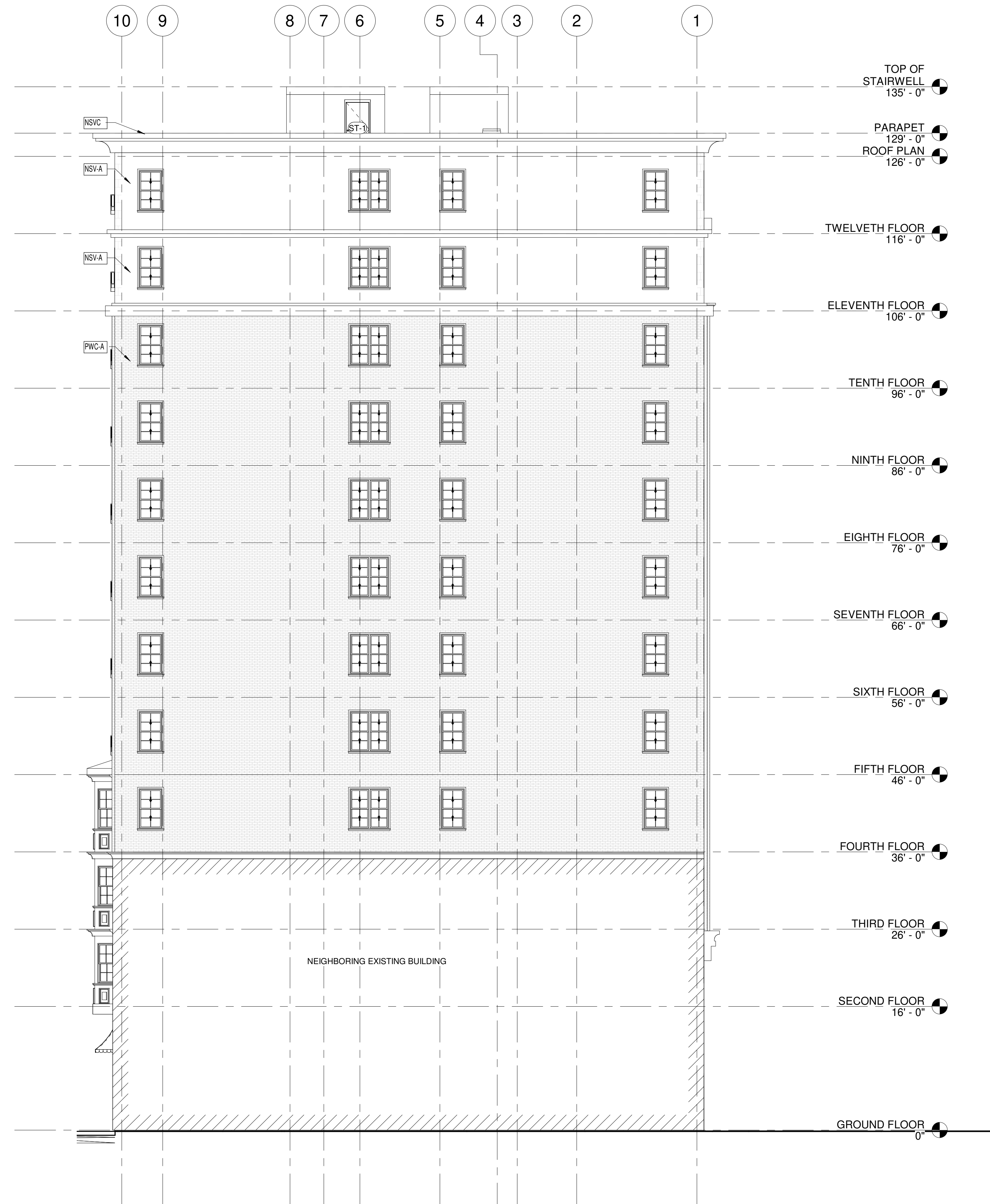
Ballina
GROUP, LLC

1439 Monroe Ave., Ste. 1, Durnore, Pennsylvania 19059
Tel. 570.207.0195 www.ballinagroup.com

[illegible]NORTH AND WEST
ELEVATIONS

Project Number	2020-21
Date	1/15/2020
Drawn By	CA
Checked By	JC
Scale	As indicated

A-200



EXTERIOR FINISH LEGEND	
PWC A	PANELIZED WALL CLADDING FINISH COLOR A
PWC B	PANELIZED WALL CLADDING FINISH COLOR B
NSV A	NATURAL STONE VENEER - FINISH A
NSV B	NATURAL STONE VENEER - FINISH B
NSV C	NATURAL STONE VENEER CORNICE - FINISH A

THIS DRAWING IS THE PROPERTY OF BALLINA GROUP, LLC AND HAS BEEN PREPARED SPECIFICALLY FOR THE OWNER FOR THIS PROJECT AT THIS SITE, AND IS NOT TO BE USED FOR ANY OTHER PURPOSE, LOCATION, OR OWNER WITHOUT WRITTEN CONSENT OF BALLINA.GROUP.

**SOUTH NEW STREET MIXED-USE
APARTMENT COMPLEX**
317-327 S. NEW STREET
BETHLEHEM, PA

Ballina
GROUP, LLC

1435 Monroe Ave., Ste. 1, Dunmore, Pennsylvania 18509
Tel. 570.207.0195 www.ballinagroup.com

[illegible]

SOUTH AND EAST
ELEVATIONS

Project Number	2020-21
Date	1/15/2020
Drawn By	CA
Checked By	JC
Scale	As indicated

A-201